

Transforming Health Care at the New Providence Health Campus

Background

Providence Health Care (PHC) has an exciting vision for renewing St. Paul's Hospital for the future.

To ensure British Columbians continue to get state-of-the-art health care, the hospital urgently needs to be renewed.

Its buildings are old, seismically unsafe, and lack the space and design to properly house the health-care programs, technologies and services its patients, staff and researchers need and deserve. PHC, therefore, is proposing a two-site solution:

1. a new hospital and research **health campus** at PHC's Station Street site in Vancouver; and
2. a continued presence in the West End to meet the needs of that community.

[In addition, PHC's Mount Saint Joseph Hospital site will be further transformed for acute-care delivery.]

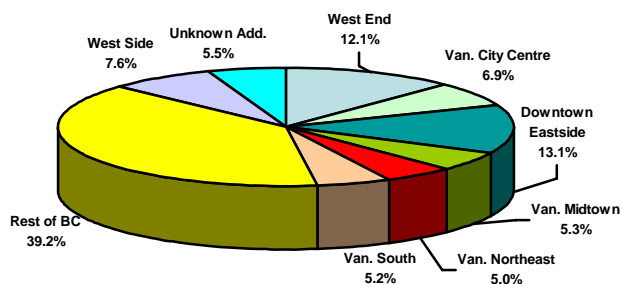


Conceptual drawing of new St. Paul's Hospital at Providence Health Campus on Station Street, Vancouver.



Conceptual drawing of potential continuing services at St. Paul's Hospital's Burrard St. site.

The Two-Site Solution for St. Paul's Hospital



St. Paul's Hospital is a provincial resource. Almost 40% of its inpatients come from outside of Vancouver.

Continued Presence in the West End

Although St. Paul's Hospital is a provincial resource – receiving almost 40 per cent of its inpatients from outside Vancouver – PHC knows it is important to continue the hospital's historic and important presence in the West End of downtown Vancouver.

PHC's vision is to maintain services for the West End community within the West End.

While retaining some heritage component of its buildings, the site could be reconfigured and redesigned to include an urgent care centre, seniors' care and services, seniors' housing, social housing, HIV/AIDS specialty

services, and ongoing primary health care for West End residents.

The Providence Health Campus at Station Street

PHC has acquired 18.5 acres of land in the east False Creek Flats area of Vancouver to enable the renewal of St. Paul's Hospital. PHC refers to the site on Station Street as the Providence Health Campus.

PHC's renewal vision for the site is to develop a health campus that includes a new St. Paul's Hospital and research facilities, along with other potential solutions for the delivery of care for the Lower Mainland and the Province of BC.

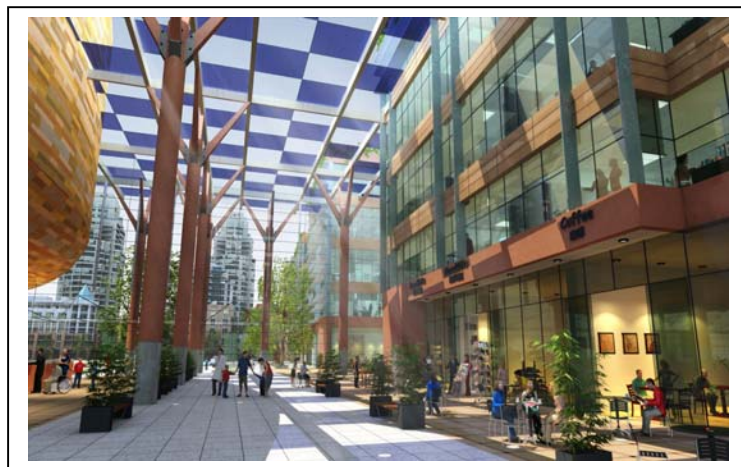


With 18.5 and acres of available land, it is an ideal opportunity to completely redesign acute and ambulatory care, offering future generations the best health solutions for the region and the province.

The campus can enable a sustainable step change in the way acute health care is delivered in BC, accelerating current trends in health care towards short-stay and ambulatory care, and adopting new approaches to care through a comprehensive process redesign – increasing efficiency and effectiveness and linking services to create better patient flow and efficient care.

The campus will deliver:

- A new patient care model, focused on increased shift to outpatient and same day/short stay medical and surgical services, improved efficiency, patient safety and outcomes.



- Strengthened clinical teaching and research capabilities, consistent with medical school expansion plans and inter-disciplinary training goals.
- Optimal use of facility and human resources.
- The opportunity to leverage and enhance medical research applications.
- A catalyst for health research and growth in the bio-technology sector into the future

- A safe, efficient, affordable, adaptable and sustainable environment.

The Campus will attract and retain health care professionals and replace inappropriate physical infrastructure to meet current and future demand and changes in health care, and to support the future health care direction for British Columbia.

Model of Care

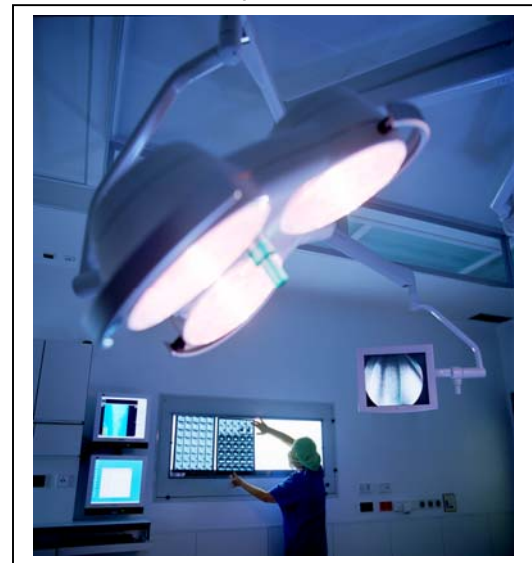
The model of care for the campus would be based upon the provision of an integrated academic and research campus providing specialized and unique services, including tertiary and quaternary care, linking research, teaching and clinical care programs.

Within the new campus, re-engineered processes will optimize patient flows, facilitate earlier discharge, and patient and staff safety, delivering more rapid translation of research into patient-focused treatments.

New designs will ensure integration and efficiency improvements and will facilitate the use of new technologies and new equipment. Updated operating rooms will also contribute to improved patient wait times and outcomes.

The campus will be developed on the basis of “Lean Flow Analysis,” a widely used design tool that is intended to optimize operating efficiencies in complex processes, including for example:

- The development of a Patient Intake Centre to consolidate many patient flows around admission processes and to act as a gate for clearing patients prior to providing more complex services;
- Consolidation of patient flows into and out of therapeutic/invasive services requiring anesthesia, and associated consolidation of staff to allow more efficient staffing flows;
- 100% acuity flexible single patient bedrooms. The review of a broad spectrum of evidence based design research demonstrates extensive support for single patient rooms.
- An acute academic/research campus focused upon the provision of emergency services, inpatient services and specialty services.
- Therapeutic/invasive services, outpatient clinics and clinical support services. For analytical purposes, this approach has been presented as a single “Centre for Ambulatory and Surgical Treatment” (CAST), and will involve multiple linked facilities.



Benefits of Renewing at Providence Health Campus

The St. Paul’s Hospital renewal at the Providence Health Campus will benefit patients through:

- 146,000 more ambulatory visits per year
- 33,000 more medical imaging tests
- 20,000 more ER visits

It will immediately improve health care using the latest technology and facility designs to decrease wait times, improve patient flows and access, improve overall care and safety -- especially in the areas of infection control, earthquake preparedness and emergency care.

The new hospital will be 26 per cent cheaper to build at the Providence Health Campus site than a complete renovation at the current Burrard Street site.

A new hospital will also be faster to build at the Providence Health Campus site: taking five years for construction as opposed to 15 years' construction for a rebuild at the current Burrard Street site.

In addition, a new hospital at Providence Health Campus will result in 12 per cent annual operational and efficiency savings.

Because the Station Street campus site has more space (18.5 acres compared to the current Burrard St. site's 6.5 acres), it will be able to meet the 30 per cent additional space required to meet the health-care demands for 2020 and beyond; and it will have flexibility to expand for future growth requirements. (All these advantages are not present for a rebuild option at the current Burrard St. site.)